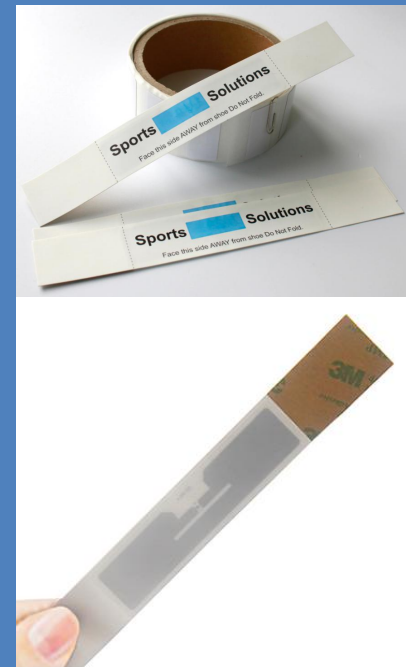




RFID Race Timing Tag:

RFID Shoe tag is a waterproof rfid tag for rfid timing system, designed for Athletes, it obtain a unique ID number to be sent when athletes cross the sports antenna pad, it provide race starting and ending timings for individuals in

race and measure each competitor's speed, distance and direction traveled in real-time.. This rfid tag provide a very reliable high-speed read rate (120 tags per second) at a very low cost, so that it's popular in running, cycling, marathon and adventure competitives. The main advantages are those of have stable performance in various sports and having more competitive costs .



Physical Characteristics

Dimensions	180*25MM+/-0.5mm
Thickness	0.25+/-0.04mm
Material	PP Paper

User Environment

Operation Temperature	-10°C to +75°C
-----------------------	----------------

Performance Specifications

CHIP	Alien H3/ Impinj M4QT
Functionality	Read/Write
Operation Frequency	860-960MHz
Protocol	ISO18000-6C
Write Endurance(cycles)	100,000times
Read Distance	1~8M (Reader dependent)
Read Mode	Read/Write, RTF (Reader Talk First)
Installation	3M adhesive

Feature Specifications

Feature	* Simply shoelace binding design, easy to wear and not easy to fall off * The surface can be customized printing
---------	---

Application	Sports Match, Marathon, Running, Timing
-------------	---

- ❖ ISO18000-6C Compliant
- ❖ Operates at UHF 860-960MHz
- ❖ Read/Write
- ❖ Fast read rates for dense reader environments
- ❖ Silk printing possible
- ❖ Rugged & comfortable design

RFID Goodwin reserves the right to change its products and services at any time without notice.